



## QUICK STATS

Local Events per month: 500–1,000

Visitors per month: 20,000–45,000

Pageviews per month: 50,000–80,000

Connection: 48% desktop–52% mobile

Location: 96% USA–50% Missoula Metro

Duration: Avg 2-mins per session

June '24

## ENHANCED FEATURE PAGE \$700/year

- Increase your presence, reach a larger audience.
- Include your upcoming events, logo, location, keyword-optimized description, social media link(s), and other useful information.
- Includes access to Feature Page RSS Feed and/or iFrame feed.
- Private login to add, edit, and delete your events and contact information.
- \$200 online ad credit and 10% off all other ads.
- Annual Feature Page Vertical Banner.
- Mentions on our Social Media pages and stories.
- Single-month and seasonal pricing is available.
- Nonprofit \$550

## IFRAMES & RSS FEEDS \$750/year

- Customized, interactive feed of the whole calendar for use on your website.
- Examples: Arts Missoula, Missoula Downtown Partnership, Trail 103.3 FM and NBC Montana. Single-month and seasonal pricing available.

## BANNER ADVERTISING & SIZES

(dimensions are in pixels—ads under 100k—jpeg, gif and png)

Featured Ad	\$150/week	192 x 192
Medium Rectangle	\$75/week	300 x 250
Half Page	\$75/week	300 x 600
Mobile Banner	\$75/week	320 x 50

## COMMUNITY DISCOUNTS

- MDA members—10% OFF
- Non-profits & Schools—15% OFF
- Bundle with [Missoula Indoor Ads](#)—Online 50% OFF

**Molly Bradford**    molly@gatherboard.com    406.880.0880  
**Lori Chase**        lori@gatherboard.com    406.396.2275  
**Nikki Robb**        nikki@gatherboard.com    406.274.7628



# missoula indoor

[www.MissoulaIndoorAds.com](http://www.MissoulaIndoorAds.com)



## In Your Face

- \* Request ad placement locations
- \* 300+ frames throughout metro Missoula
- \* 2-minutes of uninterrupted viewing time, per visit
- \* Restaurants, gyms, bars, boutiques, theaters, stadiums, cafes ...



### INDOOR AD RATES

	Cost per Frame	Monthly Minimum: 4/frames	Cost per month
12-mo .....	\$70 each		\$280/mo
6-mo .....	\$80 each		\$320/mo
3-mo .....	\$90 each		\$360/mo
Open Rate .....	\$100 each		\$400/mo

### SIZE

8.5" w x 11" h

### LOCATIONS LIST

[www.MissoulaIndoorAds.com](http://www.MissoulaIndoorAds.com)

### FORMAT

Full color - Leave 1/4" white edge  
PNG, JPEG, or PDF  
High resolution jpeg (min 300 dpi)

### AD PRODUCTION

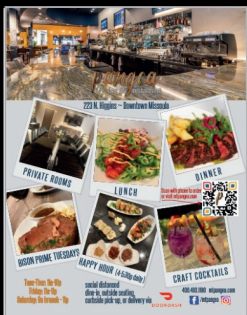
Single Ad w/ 3-revisions—\$120  
Additional Revisions—\$40  
Single Ad design included with 3-, 6- and 12-month agreements.

### DEADLINES

Space Reserved on or before 25th of every month.  
Ads due on or before 28th of every month.

### COMMUNITY DISCOUNTS

MDA members—10% OFF  
Non-profits, Schools—15% OFF  
Bundle Online with [MissoulaEvents.net](http://MissoulaEvents.net) for 50% OFF



### BECOME AN INDOOR HOST

When you host Indoor Frames, you accrue online & indoor ad credits—more details, [MissoulaIndoorAds.com](http://MissoulaIndoorAds.com)

### WE SUPPORT MISSOULA

We believe in community-business alliances. We sponsor and donate nearly \$30,000 in annual ad space to local non-profit and scholastic organizations every year. Ask about our non-profit event sponsorship package.

<b>Molly Bradford</b>	<a href="mailto:molly@gatherboard.com">molly@gatherboard.com</a>	406.880.0880
<b>Lori Chase</b>	<a href="mailto:lori@gatherboard.com">lori@gatherboard.com</a>	406.396.2275
<b>Nikki Robb</b>	<a href="mailto:nikki@gatherboard.com">nikki@gatherboard.com</a>	406.274.7628

**GatherBoard**

